

Scout for foliar diseases in soybeans just prior to R3 and answer the following questions when considering an application of foliar fungicide:

### What has the weather been like?

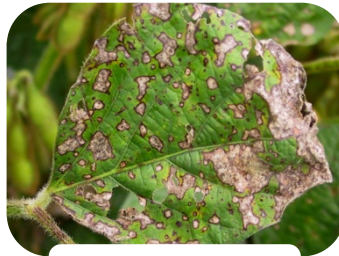
- Rainy and/or humid weather is most favorable to foliar diseases.

### How susceptible is the variety?

- The greater the disease resistance rating for a variety, the less likely a fungicide application will result in economic benefit.

#### Frogeye leaf spot

- Symptoms appear as light gray centers surrounded by dark borders.
- Yield losses can reach 30% with a severe infection.
- Infection occurs when spores from infected residue are splashed onto the leaves.



Frogeye leaf spot

#### Septoria brown spot

- Disease starts in the lower canopy.
- Spots are small, dark brown and irregularly shaped.
- Warm, wet weather favors the development of the disease.



Septoria brown spot

#### Asian soybean rust

- Disease does not overwinter in the Midwest.
- Spores are carried by southern storms.
- Extended periods of cool, wet weather or high humidity favor the disease.



Asian soybean rust

### Does the field have a history of disease?

- Some field locations may have a history of greater foliar disease severity.
- River bottoms, low areas or fields surrounded by trees may be more prone to foliar diseases.

### What was the previous crop?

- Foliar pathogens survive on soybean stubble.
- Risk of foliar diseases increases when a field is planted with soybeans consecutive years.

- For best results, make a fungicide application to soybeans at growth stage R3 (pods are 3/16 inch long at one of the four uppermost nodes.)
- A spray volume of at least 15 gallons/acre (for ground applications) will provide the best coverage.
- For aerial applications, use a volume of five gallons/acre.

### Average yield response for fungicide and insecticide treatments evaluated in 2004 to 2008 studies

Treatment <sup>1</sup>	Years Tested	N <sup>2</sup>	Yield Response (bu/acre)
Headline® R1	2007	40	2.3
Headline R3	2004-08	100	3.7
Quadris® R3	2004-08	100	2.9
Folicur® R3	2004-06	48	1.5
Quadris/Warrior® R3	2005-08	88	4.1
Headline/Asana® R3	2007-08	52	5.5
Headline R5	2004-06	48	2.7
Quadris R5	2004-06	48	1.6
Headline R3 + R5	2004-06	48	4.6

### Disease ratings for Pioneer® brand soybean varieties<sup>3</sup>

Variety <sup>4</sup>	Frogeye Leaf Spot Disease Rating <sup>5</sup>		
92Y80 (RR)	6	93Y70 (RR)	6
93Y05 (RR)	6	93Y92 (RR)	9
93Y40 (RR)	6	94Y01 (RR)	6
93M42 (RR)	9	94Y60 (RR)	8
93Y51 (RR)	8	94Y80 (RR)	8

Asana® is a registered trademark of DuPont. Asana® is a restricted-use pesticide.

All products are trademarks of their respective manufacturers.

<sup>1</sup> Always read and follow label directions. Consult your local ag chem retailer for specific rates and recommendations.

<sup>2</sup> Number of comparisons.

<sup>3</sup> 1= susceptible, 9 = resistant

<sup>4</sup> Pioneer brand products are provided subject to the terms and conditions of purchase which are part of the labeling and purchase documents. Pioneer is a brand name; numbers identify products.

<sup>5</sup> Ratings based upon period-of-years testing and were the latest available at time of printing. Product responses are variable and subject to any number of environmental, disease and pest pressures. Individual results may vary. Refer to [www.pioneer.com/products](http://www.pioneer.com/products) or contact a Pioneer sales professional for the latest and complete listing of traits and scores for each Pioneer® brand product.



RR = Contains the Roundup Ready® gene.  
®Roundup Ready is a registered trademark used under license from Monsanto Company.



**PIONEER**  
A DUPONT BUSINESS

Pioneer Agronomy Sciences ®, SM, TM Trademarks and service marks of Pioneer Hi-Bred. © 2012, PHII